

CLINICAL
TRIALS

CENTRAL
LAB

MICROBIOTA
NGS PLATFORM

RESEARCH
PROGRAMS



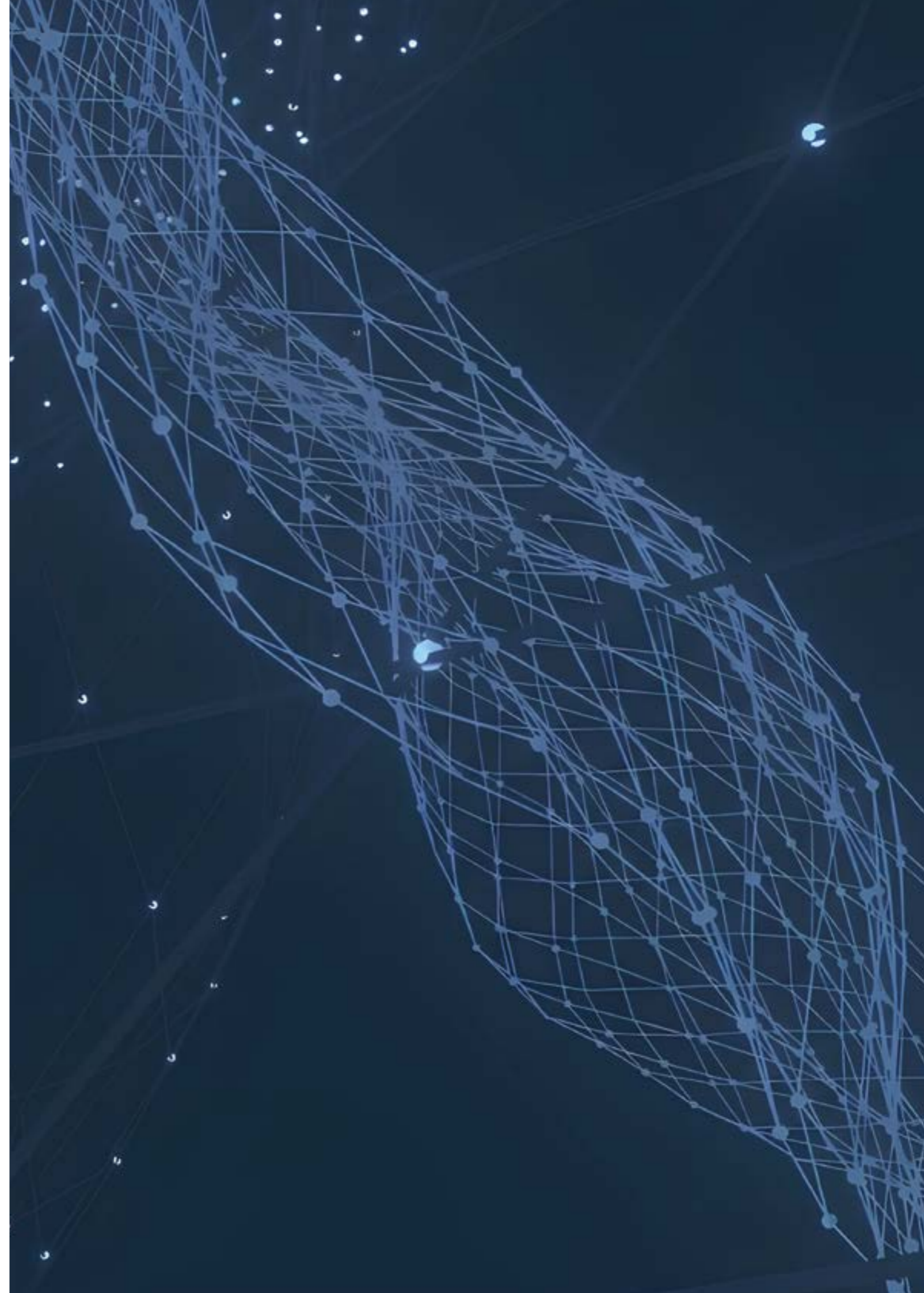
PARAMETERS CATALOG

Central Lab activity

METABOLISM
IMMUNOLOGY
ONCOLOGY
INFECTIOUS
GASTRO INTESTINAL...

SUMMARY

MICROBIOME	04
Biochemistry	
Microbiology	
NGS	
Parasitology	
Sample Prep	
Virology	
BIOCHEMISTRY	09
Blood	
Urine	
SEROLOGY/VIROLOGY	16
COMPLETE BLOOD COUNT	18
Optional	
Standard	
HEMATOLOGY	20



BIOCHEMISTRY

GENERAL

Parameter	Method	Matrix
Bristol Stool Scale	Examen visuel	Stool
Dry matter	Dessication des Stool fraîches	Stool
Faecal calprotectin	Immunoturbidimetry	Stool
Faecal EDN	ELISA	Stool
Faecal Eosinophil Cationic Protein (ECP)	ELISA	Stool
Faecal Hemoglobin	Immuno-chromatography (manual technique)	Stool
Faecal neopterin	ELISA	Stool
Faecal Zonulin	ELISA	Stool
Humidity rate (Stool)	Dessication	Stool
pH	pH metry	Stool
Secretory IgA	ELISA	Stool

BILE ACIDS

Parameter	Method	Matrix
Bile salts	LC-MS/MS (Liquid chromatography-mass spectrometry)	Stool
Chenodeoxycholic acid (bile acid)	LC-MS/MS (Liquid chromatography-mass spectrometry)	Stool
Cholic acid (bile acid)	LC-MS/MS (Liquid chromatography-mass spectrometry)	Stool
Deoxycholic acid (bile acid)	LC-MS/MS (Liquid chromatography-mass spectrometry)	Stool
Hyodeoxycholic acid (bile acid)	LC-MS/MS (Liquid chromatography-mass spectrometry)	Stool
Lithocholic acid (bile acid)	LC-MS/MS (Liquid chromatography-mass spectrometry)	Stool
Ursodesoxycholic acid (bile acid)	LC-MS/MS (Liquid chromatography-mass spectrometry)	Stool

SHORT CHAIN FATTY ACIDS

Parameter	Method	Matrix
Faecal acetate (Short Chain Fatty Acids - SCFA)	GC-MS (Gas chromatography-mass spectrometry)	Stool
Faecal butyrate (Short Chain Fatty Acids - SCFA)	GC-MS (Gas chromatography-mass spectrometry)	Stool
Faecal isobutyrate (Short Chain Fatty Acids - SCFA)	GC-MS (Gas chromatography-mass spectrometry)	Stool
Faecal propionate (Short Chain Fatty Acids - SCFA)	GC-MS (Gas chromatography-mass spectrometry)	Stool
Faecal valerate (Short Chain Fatty Acids - SCFA)	GC-MS (Gas chromatography-mass spectrometry)	Stool

GASTROINTESTINAL PANEL

Parameter	Method	Matrix
Adenovirus F 40/41	PCR	Stool
Astrovirus	PCR	Stool
Campylobacter	PCR	Stool
Clostridium difficile toxin A/B	PCR	Stool
Cryptosporidium	PCR	Stool
Cyclospora cayetanensis	PCR	Stool
E. coli O157	PCR	Stool
Entamoeba histolytica	PCR	Stool
Enteroggregative E. coli (EAEC)	PCR	Stool
Enteropathogenic E. coli (EPEC)	PCR	Stool
Enterotoxigenic E. coli lt/st (ETEC)	PCR	Stool
Giardia lamblia	PCR	Stool
Norovirus GI/GII	PCR	Stool
Plesiomonas shigelloides	PCR	Stool
Rotavirus A	PCR	Stool
Salmonella	PCR	Stool
Sapovirus	PCR	Stool
Shiga-like toxin-producing E. coli stx1/stx2 (STEC)	PCR	Stool
Shigella/Enteroinvasive E. coli (EIEC)	PCR	Stool
Vibrio	PCR	Stool
Vibrio cholerae	PCR	Stool
Yersinia enterocolitica	PCR	Stool

MICROBIOLOGY

Parameter	Method	Matrix
Bifidobacterium spp	Real time PCR	All
Candida albicans	Real time PCR	All
Candida glabrata	Real time PCR	All
Carbapenemase producing Enterobacteriaceae (CPE)	Culture	Stool
Chlamydia trachomatis	Real Time multiplex PCR	Vaginal
Enterobacteriaceae	Real time PCR	All
Extended-spectrum beta-lactamase producing Enterobacteriaceae (ESBL)	Culture	Stool
Glycopeptide resistant enterococcus (GRE)	Culture	Stool
Helicobacter pylori	Real time PCR	All
Imipenem-resistant Acinetobacter baumannii (IRAB)	Culture; if positive, identification by mass spectrometry and subsequent antibiotic susceptibility testing	Stool
Lactobacillus crispatus	Real time PCR	All
Lactobacillus fermentum	Real time PCR	All
Lactobacillus gasseri	Real time PCR	All
Lactobacillus iners	Real time PCR	All
Lactobacillus jensenii	Real time PCR	All
Listeria monocytogenes [Real time PCR]	Real time PCR	Stool
Methicillin-resistant Staphylococcus aureus (MRSA)	Culture	Stool
Neisseria gonorrhoeae	Real Time multiplex PCR	Vaginal
Nugent Score	Examen direct (microscopie et coloration de Gram)	Vaginal
Propionibacterium acnes (Cutibacterium acnes)	Real time PCR	All
Roseburia spp	Real time PCR	All
Saccharomyces Cerevisiae	Real time PCR	All
Total bacteria (16S rRNA gene)	Real time PCR	All
Total bacteria (tuf gene)	Real time PCR	All
Ureaplasma urealyticum	Real Time multiplex PCR	Vaginal
Yeasts	Examen direct (microscopie et coloration de Gram)	Vaginal

NGS

Parameter	Method	Matrix
Metabarcoding 16S targeting the V3-V4 region of the 16S rRNA gene	Next Generation Sequencing	All
Shotgun metagenomic	Next Generation Sequencing	All
Whole genome sequencing	Next Generation Sequencing	Strains

PARASITOLOGY

Parameter	Method	Matrix
Blastocystis hominis	Concentration des Stool puis examen microscopique +/- PCR multiplex	Stool
Cryptosporidium spp	Real time PCR	Stool
Dientamoeba fragilis	Concentration des Stool puis examen microscopique +/- PCR multiplex	Stool
Entamoeba histolytica	Real time PCR	Stool
Enterocytozoon spp. / Encephalitozoon spp.	Real time PCR	Stool
Giardia intestinalis	Real time PCR	Stool
Helminths (Ancylostoma spp, Ascaris spp, Oxyure / Enterobius vermicularis, Hymenolepis spp, Necator americanus, Taenia spp, Trichuris trichiura)	Real time PCR	Stool
Isospora sp.	Concentration des Stool puis examen microscopique +/- PCR multiplex	Stool
Strongyloïdes spp.	Real time PCR	Stool
Trichomonas Vaginaalis	Real Time multiplex PCR	Vaginal

SAMPLE PREP

Parameter	Method	Matrix
DNA extraction (Nasal)	DNA extraction with chemical and mechanical lysis and purification on a silica column	Nasal
DNA extraction (Unstimulated saliva and panoral swab)	DNA extraction with chemical and mechanical lysis and purification on a silica column	Salive
KingFisher Flex DNA extraction (Skin, Vaginaal)	Automated DNA Extraction with chemical and mechanical lysis	Skin, Vaginal
KingFisher Flex DNA extraction (Stool)	Automated DNA Extraction with chemical and mechanical lysis	Stool

VIROLOGY

Parameter	Method	Matrix
Adenovirus	Quantitative reverse transcription PCR	Nasal
Bocavirus	Quantitative reverse transcription PCR	Nasal
Enterovirus [RT-PCR GeneProof]	Extraction ARN + RT-PCR	Stool (DNA/ RNA Shield)
Hepatitis A : Stool viral load [RT-PCR AltoStar]	Extraction ARN + RT-PCR	Stool
Hepatitis E : Stool viral load [RT-PCR Eurobio-Plex]	Extraction ARN + RT-PCR	Stool
Rhino/Enterovirus	Quantitative reverse transcription PCR	Nasal
SARS-CoV-2 [RT-PCR RealAccurate Quaduplex]	Extraction ARN + RT-PCR	Stool

BLOOD
GENERAL

Parameter	Method	Matrix
Adiponectin	ELISA	Serum/ Plasma
Albumin (blood)	Immunturbidimetry	Serum/ Plasma
Alkaline phosphatase (ALP)	Enzymatic colorimetry	Serum/ Plasma
ALT (ou ALAT Alanine Aminotransferase)	IFCC (International Federation of Clinical Chemistry), with pyridoxal phosphate at 37°C	Serum/ Plasma
Apolipoprotein A1	Immunturbidimetry	Serum/ Plasma
Apolipoprotein B	Immunturbidimetry	Serum/ Plasma
Arylesterase activity of PON-1	Kinetics	Serum
AST (or ASAT Aspartate Aminotransferase)	IFCC (International Federation of Clinical Chemistry), with pyridoxal phosphate at 37°C	Serum/ Plasma
Beta2 microglobulin	Immunturbidimetry	Serum/ Plasma
Bicarbonate	Enzymatic	Serum/ Plasma
Blood Ionised Calcium	Colorimetry with 5-nitro-5'-methyl-BAPTA reaction	Serum/ Plasma
Blood Iron	Photometric test with FerroZine method	Serum/ Plasma
Blood Magnesium	Colorimetry	Serum/ Plasma
Blood neopterin	ELISA	Serum
Blood uric acid	Enzymatic colorimetry	Serum/ Plasma
Blood zonulin	ELISA	Serum
BNP (brain natriuretic peptide)	Immunoenzymatic test	Plasma
Bone Alkaline phosphatase (BALP)	Immunoenzymatic test	Serum
Brain Derived Neurotrophic Factor (BDNF)	ELISA	Serum/ Plasma
Calcium (blood)	Colorimetry with 5-nitro-5'-methyl-BAPTA reaction	Serum/ Plasma
CCL25 (C-C motif chemokine ligand 25)	Luminex / technologie multiplex	Serum/ Plasma
CCL28 (C-C motif chemokine ligand 28)	Luminex / technologie multiplex	Serum/ Plasma

CD14 (Monocyte Differentiation Antigen CD14)	Luminex / technologie multiplex	Serum/ Plasma
CD30 (biomarqueur CD30)	Luminex / technologie multiplex	Serum/ Plasma
Cholesterol non-HDL	Calculated	Serum/ Plasma
Cholinesterase	Colorimetric method with butyrylthiocholine	Serum/ Plasma
Cortisol (blood)	Electrochimiluminescence immunoassay «ECLIA»	Serum/ Plasma
C-Peptide (Blood)	Electrochimiluminescence immunoassay «ECLIA»	Serum/ Plasma
Creatine kinase	UV Test	Serum/ Plasma
Creatinine (blood)	Kinetics colorimetry (Jaffé's method)	Serum/ Plasma
Cross Linked N-telopeptide of type I Collagen (NTx1)	ELISA	Serum
CRP C-reactive protein	Immunoturbidimetry	Serum/ Plasma
CXCL10 (C-X-C motif chemokine ligand 10)	Luminex / technologie multiplex	Serum/ Plasma
Direct Bilirubin	Colorimetric diazo	Serum/ Plasma
E vitamin	HPLC	Serum/ Plasma
Ferritin	Electrochimiluminescence immunoassay «ECLIA»	Serum/ Plasma
FGF19 - Fibroblast Growth Factor 19	ELISA	Plasma
FGF21 - Fibroblast Growth Factor 21	ELISA	Serum/ Plasma
Fibrinogen	Chronometry	Plasma
Free IGF-1	ELISA	Plasma
Fructosamin (glycated proteins)	Colorimetric test by reaction with nitroblue tetrazolium	Serum/ Plasma
GGT - Gamma-glutamyltransferase	Enzymatic colorimetry	Serum/ Plasma
GLP-1 : Glucagon-Like Peptide-1	Electrochimiluminescence immunoassay	Plasma
Glucose (blood) - Fasting Glycemia	Enzymatic colorimetry with Hexokinase	Serum/ Plasma
HDLd (direct analysis method)	Enzymatic colorimetry	Serum/ Plasma
Hemoglobin	Colorimetry	Blood
HOMA B (Homeostatic model assessment-B)	Calculated	Serum/ Plasma
HOMA IR (Homeostatic model assessment-IR)	Calculated	Serum/ Plasma

HOMA S (Homeostatic model assessment-S)	Calculated	Serum/ Plasma
Homocysteine	LC MS MS	Serum
HS CRP - High Sensitive C-reactive protein	Immunoturbidimetry	Serum/ Plasma
IFN γ (Interferon gamma)	Luminex / technologie multiplex	Serum/ Plasma
IFN α Interferon α	ELISA	Serum/ Plasma
IGF1 Total	ELISA	Serum/ Plasma
IGFBP-2	ELISA	Serum/ Plasma
IGFBP-3	ELISA	Serum/ Plasma
IL-10 (Interleukin-10)	Luminex / technologie multiplex	Serum/ Plasma
IL-10 HS (High Sensitivity Interleukin-10)	ELISA	Plasma
IL-11 (Interleukin 11)	Luminex / technologie multiplex	Serum/ Plasma
IL-12p70 (Interleukin-12p70)	Luminex / technologie multiplex	Serum/ Plasma
IL-13 (Interleukin-13)	Luminex / technologie multiplex	Serum/ Plasma
IL-17/IL-17A (Interleukin 17)	Luminex / technologie multiplex	Serum/ Plasma
IL-17A (Interleukin-17A)	Luminex / technologie multiplex	Serum/ Plasma
IL-18 (Interleukin 18)	Luminex / technologie multiplex	Serum/ Plasma
IL-1 β (Interleukin-1 beta)	Luminex / technologie multiplex	Serum/ Plasma
IL-2 (Interleukin 2)	Luminex / technologie multiplex	Serum/ Plasma
IL-5 (Interleukin-5)	Luminex / technologie multiplex	Serum/ Plasma
IL-6 (Interleukin-6)	Luminex / technologie multiplex	Serum/ Plasma
IL-6 HS (High Sensitivity Interleukin-6)	ELISA	Serum/ Plasma
IL-8 (Interleukin-8)	Luminex / technologie multiplex	Serum/ Plasma
Inorganic phosphate	End-point test	Serum/ Plasma
Insulinemia	Electrochimiluminescence immunoassay «ECLIA»	Serum/ Plasma
Lactate deshydrogenase (LDH)	UV Test	Serum/ Plasma

LDL Direct	Enzymatic colorimetry	Serum/ Plasma
LDLc	Calculated (Friedewald's method)	Serum/ Plasma
Leptin	ELISA	Serum/ Plasma
Lipopolysaccharide Binding Protein (LBP)	Luminex / technologie multiplex	Serum/ Plasma
Lipoprotein A Lp(A)	Test immunoturbidimetric sur particules de latex	Serum/ Plasma
MCP1 (Monocyte Chemoattractant Protein-1) / CCL2	Luminex / technologie multiplex	Serum/ Plasma
N-MID Osteocalcine	Immunoassay	Serum/ Plasma
N-terminal propeptide of procollagen type 1 (P1NP)	Electrochimiluminescence immunoassay «ECLIA»	Serum/ Plasma
P3NP : Amino-terminal pro-peptide of type III procollagen	Radioimmunoassay	Plasma
PCSK9	ELISA	Plasma
Plasminogen activator inhibitor-1	Kinetics colorimetry	Plasma
Prealbumin Thyroxine Binding Prealbumin Transthyretin	Immunoassay	Serum/ Plasma
Prothrombin Time test	Chronometry	Plasma
Reg3 α (Regenerating islet derived protein 3 alpha)	Luminex / technologie multiplex	Serum/ Plasma
Salivary cortisol	Electrochimiluminescence immunoassay «ECLIA»	Saliva
sCD163 : Soluble Cluster of Differentiation 163	ELISA	Plasma
sIL-1R alpha (Interleukin-1 receptor alpha)	Luminex / technologie multiplex	Serum/ Plasma
sIL-2R alpha (Interleukin-2 receptor α / chain (CD25))	Luminex / technologie multiplex	Serum/ Plasma
Soluble Human cytoke­ratin 18 (sCK18)	ELISA	Serum/ Plasma
ST2 : Suppression of Tumorigenicity 2	ELISA	Serum/ Plasma
Tetrahydrofolate (THF)	UPLC-MS/MS (Ultra Performance Liquid chromatography-mass spectrometry)	Serum
TGFβ1 (Transforming Growth Factor β1)	Luminex / technologie multiplex	Serum/ Plasma
TGFβ2 (Transforming Growth Factor β2)	Luminex / technologie multiplex	Serum/ Plasma
TGFβ3 (Transforming Growth Factor β3)	Luminex / technologie multiplex	Serum/ Plasma
TIMP-1 : Tissue Inhibitor of Metalloproteinases 1	ELISA	Plasma

TNF α (Tumor Necrosis Factor alpha High Sensitivity)	ELISA	Serum/ Plasma
TNF α (Tumor Necrosis Factor alpha)	ELISA	Serum/ Plasma
TNF α (Tumor Necrosis Factor alpha)	Luminex / technologie multiplex	Serum/ Plasma
TNFR1 (Tumor Necrosis Factor Receptor 1)	Luminex / technologie multiplex	Serum/ Plasma
Total Bilirubin	Colorimetric diazo	Serum/ Plasma
Total Blood Proteins	Colorimetric test	Serum/ Plasma
Total Cholesterol	Enzymatic colorimetry	Serum/ Plasma
Total folate	UPLC-MS/MS (Ultra Performance Liquid chromatography-mass spectrometry)	Serum
Total vitamin D	Electrochimiluminescence immunoassay «ECLIA»	Serum/ Plasma
Triglycerides	Enzymatic colorimetry	Serum/ Plasma
TSH (thyroid stimulating hormon)	Electrochimiluminescence immunoassay «ECLIA»	Serum/ Plasma
Urea	Kinetics test	Serum/ Plasma
Vitamin B12	Electrochimiluminescence immunoassay «ECLIA»	Serum/ Plasma
Vitamin B9 - Folates	Competition principle with binding protein	Serum/ Plasma
β-HCG (Beta Human Chorionic Gonadotropin)	Electrochimiluminescence immunoassay «ECLIA»	Serum/ Plasma

BLOOD IONOGRAM

Parameter	Method	Matrix
Chloride (blood)	Potentiometry	Serum/ Plasma
Potassium (blood)	Potentiometry	Serum/ Plasma
Sodium (blood)	Potentiometry	Serum/ Plasma

URINE GENERAL

Parameter	Method	Matrix
Total Urinary Proteins	Turbidimetry	Urines
Urinary Albumin	Immunoturbidimetry	Urines
Urinary calcium	Colorimetry with 5-nitro-5'-methyl-BAPTA reaction	Urines
Urinary cortisol	ELISA	Urines
Urinary creatinine	Kinetics colorimetry (Jaffé's method)	Urines
Urinary isoprostane	ELISA	Urines
Urinary Osmolality	Cryoscopy	Urines
Urinary Phosphate	End-point test	Urines
Urinary Urea	Kinetics test	Urines
Urinary uric Acid	Enzymatic colorimetry	Urines
Urine Glucose	Enzymatic colorimetry with Hexokinase	Urines

IONOGRAM

Parameter	Method	Matrix
Urinary chloride	Potentiometry	Urines
Urinary Potassium	Potentiometry	Urines
Urinary Sodium	Potentiometry	Urines

Parameter	Method	Matrix
Circulating Hepatitis C Virus RNA: Blood Viral load	TMA (transcription mediated amplification) en temps réel	Serum/ Plasma
Circulating HTLV-I/II Virus RNA: Blood Viral load	RT-PCR	Blood
Circulating Human Immunodeficiency Virus (HIV-1) RNA: Blood Viral load	TMA (transcription mediated amplification) en temps réel	Blood
Cytomegalovirus : Anti-CMV IgG antibody	Chimiluminescence immunoassay «CLIA»	Serum
Cytomegalovirus : Anti-CMV IgM antibody	Chimiluminescence immunoassay «CLIA»	Serum
Cytomegalovirus DNA : Blood Viral load	PCR temps Réel	Blood
Diphtheria Immunization serology IgG	ELISA	Serum
Epstein-Barr virus : Anti-EBNA IgG antibodies (Epstein-Barr nuclear antigen)	Chimiluminescence immunoassay «CLIA»	Serum
Epstein-Barr virus : Anti-VCA IgG antibodies (viral capsid antigen)	Chimiluminescence immunoassay «CLIA»	Serum
Epstein-Barr virus : Anti-VCA IgM antibodies (viral capsid antigen)	Chimiluminescence immunoassay «CLIA»	Serum
Hepatitis A : Anti-HAV IgM	Chimiluminescence immunoassay «CLIA»	Serum
Hepatitis A : Serum viral load [RT-PCR AltoStar]	Extraction ARN + RT-PCR	Serum
Hepatitis A : Total anti-HAV antibodies	Chimiluminescence immunoassay «CLIA»	Serum
Hepatitis B : Anti-HBc antibodies	Chimiluminescence immunoassay «CLIA»	Serum
Hepatitis B : Anti-HBs antibodies	Chimiluminescence immunoassay «CLIA»	Serum
Hepatitis B : Surface Antigen HBs	Chimiluminescence immunoassay «CLIA»	Serum
Hepatitis B Virus DNA : Blood Viral load	TMA (transcription mediated amplification) en temps réel	Serum/ Plasma
Hepatitis C : Anti-HCV antibodies	Chimiluminescence immunoassay «CLIA»	Serum
Hepatitis E : Anti-HEV IgG antibodies	ELISA	Serum
Hepatitis E : Anti-HEV IgM antibodies	Chimiluminescence immunoassay «CLIA»	Serum
Hepatitis E : Serum viral load [RT-PCR Eurobio-Plex]	Extraction ARN + RT-PCR	Serum
Human Immunodeficiency Virus (HIV) : HIV 1 p24 antigen and total anti-HIV (1 and 2) antibodies	Chimiluminescence immunoassay «CLIA»	Serum
Human T-Lymphotropic Virus : Anti HTLV-I/II antibodies	Electrochimiluminescence immunoassay «ECLIA»	Serum
Poliomyelitis Immunization serology	Séroneutralisation	Serum

Strongyloidiasis : Anti-Strongyloides IgG + IgM antibodies	ELISA	Serum
Syphilis : Non-treponemal test (RPR)	Chimiluminescence immunoassay «CLIA»	Serum
Syphilis : Treponemal test (TPHA)	Chimiluminescence immunoassay «CLIA»	Serum
Tetanos Immunization serology IgG	ELISA	Serum
Toxoplasma gondii : Anti-Toxoplasma gondii IgG antibodies	Chimiluminescence immunoassay «CLIA»	Serum
Toxoplasma gondii : Anti-Toxoplasma gondii IgM antibodies	Chimiluminescence immunoassay «CLIA»	Serum

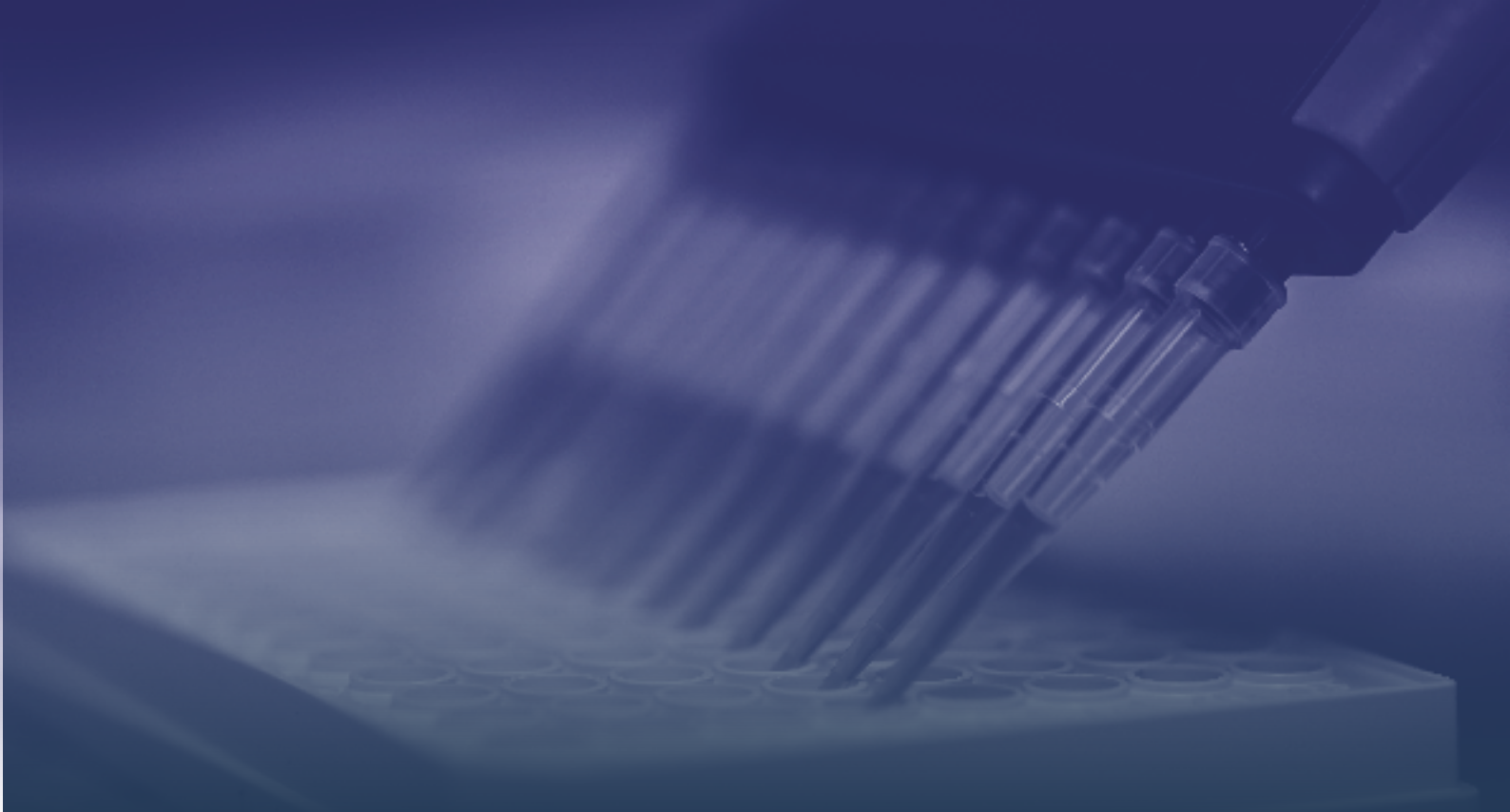
COMPLETE BLOOD COUNT

OPTIONAL

Parameter	Method	Matrix
Large immature cells (%) (LIC)	Flow cytometry	Blood
Large immature cells (LIC)	Flow cytometry	Blood
Platelet Distribution Width (PDW)	Calculated	Blood
Platelets - Large Cell Count (P-LCC)	Calculated	Blood
Platelets - Large Cell Report (P-LCR)	Calculated	Blood
Red Cell Distribution Width (RDW)	Calculated	Blood
Thrombocrit	Calculated	Blood

STANDARD

Parameter	Method	Matrix
Erythrocytes RBC	Flow cytometry	Blood
Hematocrit	Mathematical integration	Blood
Hemoglobin	Spectrophotometry	Blood
Leukocytes WBC	Flow cytometry	Blood
Lymphocytes	Flow cytometry	Blood
Lymphocytes (%)	Flow cytometry	Blood
Mean corpuscular hemoglobin (MCH)	Calculated	Blood
Mean Corpuscular Hemoglobin Concentration (MCHC)	Calculated	Blood
Mean Corpuscular Volume (MCV)	Calculated	Blood
Mean Platelet Volume (MPV)	Calculated	Blood
Monocytes	Flow cytometry	Blood
Monocytes (%)	Flow cytometry	Blood
Platelets	Impedance variation	Blood
Polynuclear Basophils	Flow cytometry	Blood
Polynuclear Basophils (%)	Flow cytometry	Blood
Polynuclear Eosinophils	Flow cytometry	Blood
Polynuclear Eosinophils (%)	Flow cytometry	Blood
Polynuclear Neutrophils	Flow cytometry	Blood
Polynuclear Neutrophils (%)	Flow cytometry	Blood
Red Cell Distribution Width (RDW)	Calculated	Blood



GET IN TOUCH

business-team@biofortis.fr



biofortis.fr